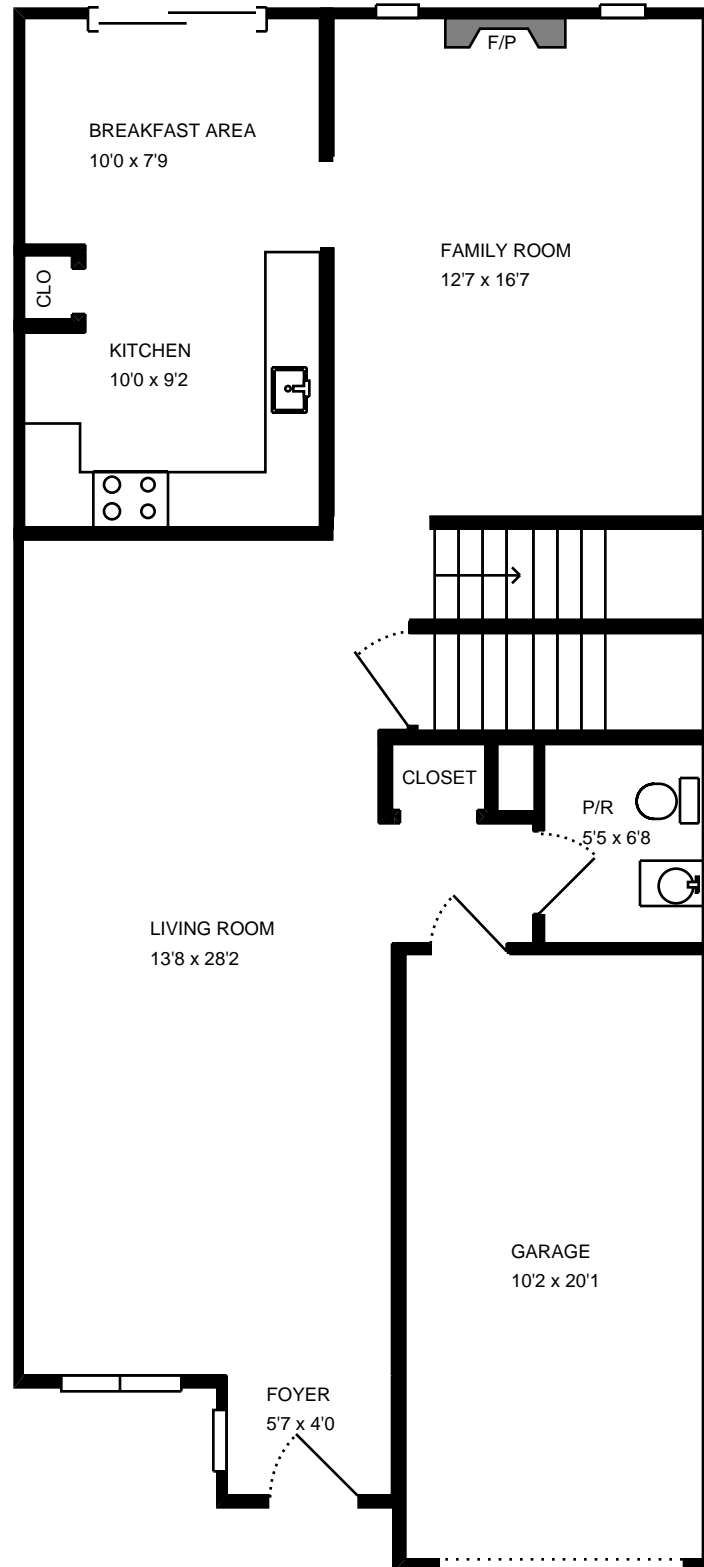


**Total interior square footage on page: 807 sf**

*The interior square footage listed is living space only and is not taxable square footage.*

Fannie Mae has provided this floor plan for general reference purposes only. None of the information appearing in this floor plan may be relied upon for any other purpose including, but not limited to, the decision to purchase the property. Fannie Mae provides no guarantee or warranty of the accuracy of this floor plan and expressly disclaims the same. The contents of this floor plan are not intended to be part of any sales agreement and are not incorporated.



**Total interior square footage on page: 864 sf**

*The interior square footage listed is living space only and is not taxable square footage*

Fannie Mae has provided this floor plan for general reference purposes only. None of the information appearing in this floor plan may be relied upon for any other purpose including, but not limited to, the decision to purchase the property. Fannie Mae provides no guarantee or warranty of the accuracy of this floor plan and expressly disclaims the same. The contents of this floor plan are not intended to be part of any sales agreement and are not incorporated.

